

## Engage3D

The first fully integrated 3D solution for MapInfo Professional users.

### Integrated 3D Environment

Add powerful 3D visualisation to MapInfo Professional via Engage3D. Display MapInfo maps, gridded surfaces, points, lines, volume models and 3D DXF objects. Extrude 2D features into 3D objects and create fly-through recordings for playback.

### Surface Creation & Analysis

The challenge of surface creation and interrogation in MapInfo Professional is now a breeze with Engage3D. With creation options including triangulation, inverse distance weighting and minimum curvature gridding linked with real time preview, Engage3D provides a new level of productivity for the MapInfo Professional environment.

### Productivity & Analysis Tools

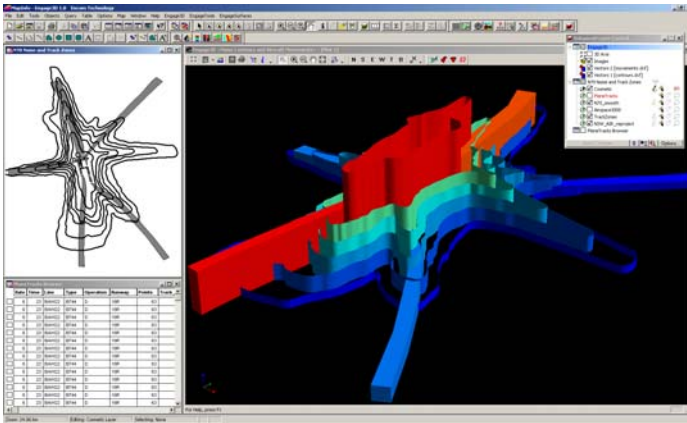
Engage3D has a host of productivity enhancing tools which include object editing, text functions, map layout, enhanced layer control and advanced coordinate functions.

## Advanced 3D visualisation

### Extrude 2D objects to 3D

Any 2D object in a MapInfo Professional layer can be extruded into a 3D object via

Engage3D's object extrusion wizard.



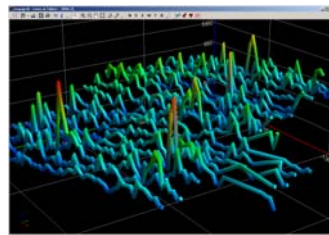
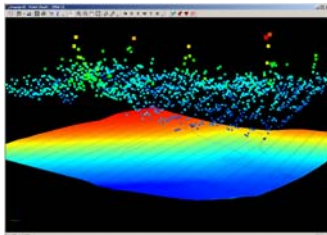
### Create 3D points and lines

Point clouds and 3D lines can be created directly from MapInfo Professional objects.

- option to display lines as tubes
- label display

Advanced controls include:

- symbol size, colour and offset modulation

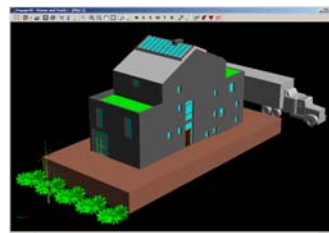


### Display 3D vector objects

Engage3D has the ability to open and display 3D DXF files created from external software packages or from MapInfo Professional vector objects.

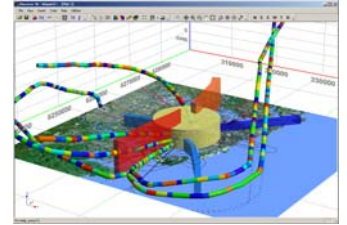
- wireframe display, surface smoothing and other advanced options

- display 3D vectors such as pipes or buildings
- colour and transparency control



### Display map window views

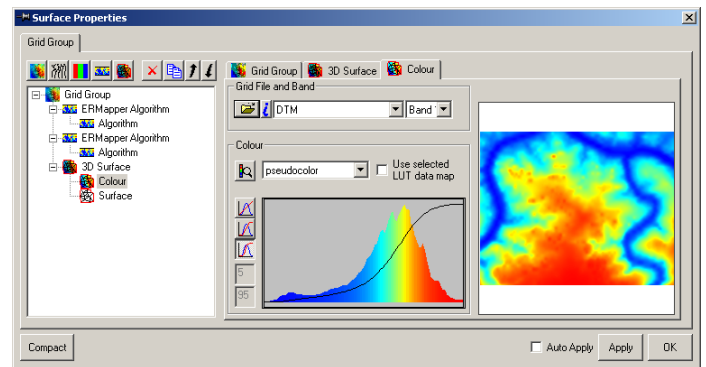
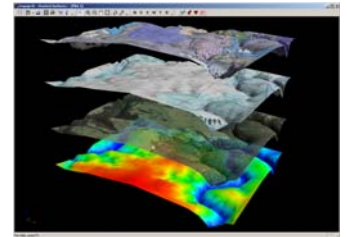
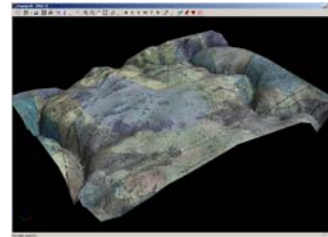
Any map window view created in MapInfo Professional can be viewed in Engage3D as a Georeferenced Bitmap Image. The georeferenced image may be displayed in Engage3D at a constant Z-level or draped over an elevation surface grid.



### Gridded surfaces

Gridded surfaces can be loaded directly into the 3D window or added as part of a

georeferenced map window view. Full colour, transparency and Z-scale control provided.



### Navigation

Mouse buttons and mouse movements provide real-time control of the 3D view. A fly-through wizard provides the creation of fly-through recordings for later playback.



## Advanced 3D visualisation cont'd

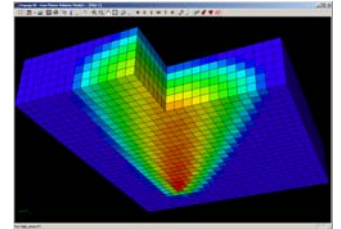
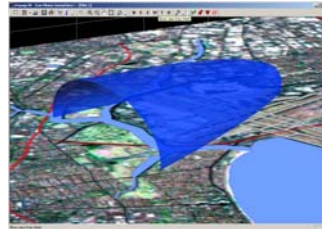
### Display 3D volume models

Engage3D has the capacity to display and manipulate 3D volume models (voxel models).

This includes:

- threshold (actual voxels), Isosurface (3D contour surfaces) and Slice visualisation options

- control of model appearance and colour
- chair clipping in X, Y and Z directions

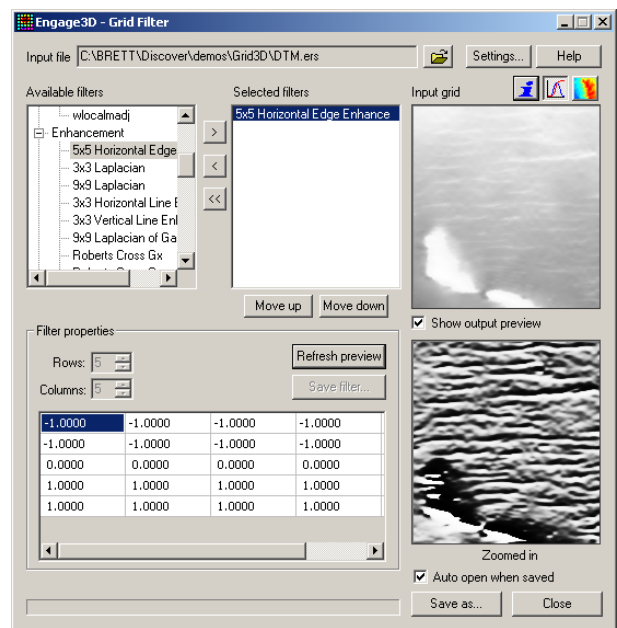
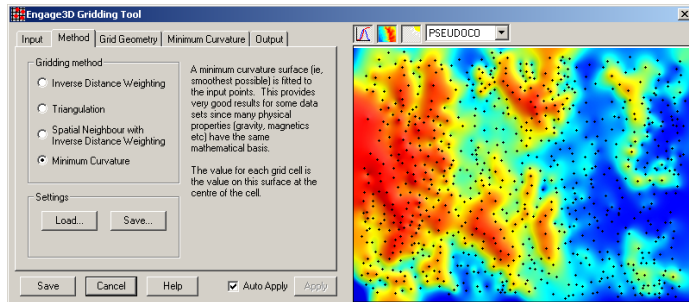
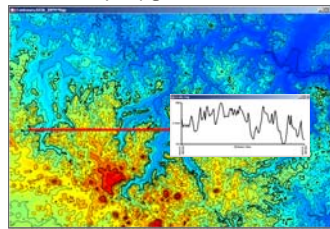


## Surface creation and analysis

Create, manipulate, contour, colour and query gridded data. Grid creation includes a real-time preview and optimal algorithm and gridding parameter selection based upon input data geometry.

Filter grids with supplied or user-created filters.

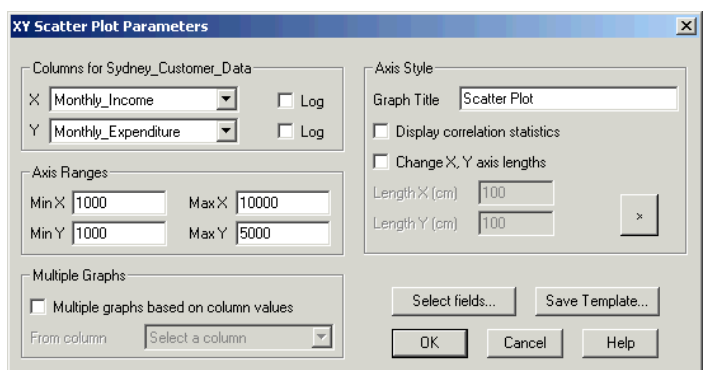
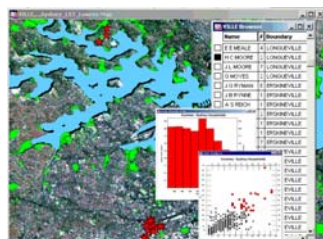
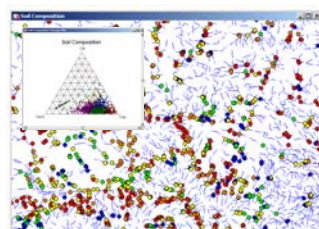
Generate modulated profiles, slope and aspect grids or Voronoi polygons.



## Graph creation and analysis

View and manipulate data in a variety of graphical styles such as scatter, distribution and ternary plots. The graph remains linked to the original map data.

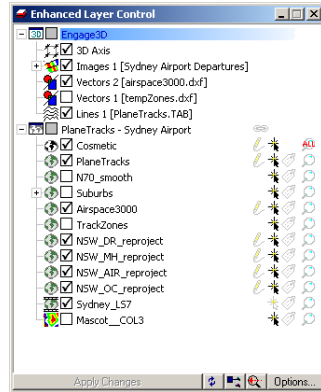
Save graphs as templates for re-use during later sessions.



## Productivity and data utilities

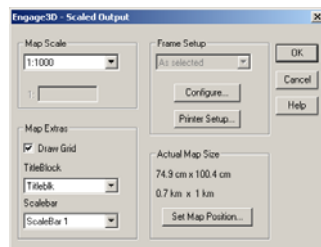
### Enhanced Layer Control

The Enhanced Layer Control gives you control of the entire MapInfo Professional workspace. Standard layer controls for editing, selecting, labelling and viewing layers are available in real-time. Layers can also be grouped, with 'drag and drop' functionality between groups and mappers.



### Map making

Create accurate and standardised scaled maps quickly and easily by setting the paper size and map scale, then positioning the map sheet over the required area. Add customisable titleblocks, map grids, legends and other data to produce high-quality maps of any size and scale.

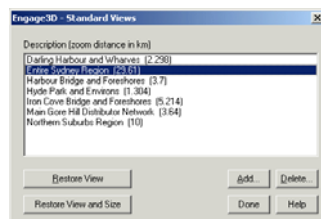


### Map window tools

Manage map windows and views with a range of zoom and selection tools. With Engage3D you can save and restore map window states, create coordinate grids and store lists of standard views and selections.

Link maps for synchronised panning and zooming. Use the

cursor position tool to identify a selected point on all maps.



## For more information

Engage3D is one of a suite of specialist GIS tools from Encom Technology. For more information about Engage3D, Encom Discover, Encom Discover Mobile, Encom Discover 3D and other solutions, contact Encom.

### Head Office

Level 2, 118 Alfred St  
Milsons Point  
NSW 2061, Australia  
Tel +61 2 9957 4117  
Fax +61 2 9922 6141

### Web

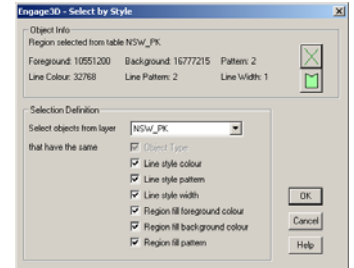
[www.encom.com.au](http://www.encom.com.au)

### Email

[engage3d@encom.com.au](mailto:engage3d@encom.com.au)

### Object editing tools

Objects can be drawn and edited via the keyboard, or using functions including polyline smoothing, node thinning, object splitting, line cutting, polygonising, object transformations and more. Zoom and selection tools let you select objects by graphical style or other criteria.



### Data and table utilities

The Engage3D powerful data manipulation utilities include text and proximity searches, table sorting, node extraction, coordinate updates and transformation, workspace editing and much more.

